

PVA-AA30NL & PUZ-AK30NLHZ
30,000 BTU/H MULTI-POSITION AIR HANDLER INDOOR UNIT
30,000 BTU/H HYPER HEAT PUMP OUTDOOR UNIT



Job Name:

System Reference:

Date:



Indoor Unit.....PVA-AA30NL

Outdoor Unit.....PUZ-AK30NLHZ



INDOOR UNIT FEATURES

- Optional humidifier control and ERV control
- Unique blow through design: Unique blow through design allows simple coil cleaning when the blower is removed
- Single-zone: One outdoor unit connects to one indoor unit to control the comfort in a single space.
- Selectable external static pressure: Selectable external static pressure: 0.30, 0.50 and 0.80 in.WG with 3 fan speeds at each static setting
- Positive pressure cabinet: Positive pressure cabinet with air leakage of less than 1.0% at 1.0 in.WG
- Optional electric heat kit: Optional electric heat kit for additional heat capacity
- Multiple control options, including the comfort app for remote access, third-party interfaces, and both wired and wireless controllers
- Multi-position installation: Multi-position installation: horizontal (left or right), vertical (up or down). For downflow configurations, the CMA-1 is recommended for proper management of condensate to prevent water blow-off in certain conditions
- Light commercial: Units with this icon are suitable for light commercial applications such as small offices, restaurants, and retail.
- Fiberglass free insulation: 1 inch R4.2 fiberglass free insulation reduces condensation and boosts efficiency
- Enclosed ECM motor: Highly efficient totally enclosed ECM motor
- Ducted air handler: Ducted air handler provides a solution to cool and heat large zones

OUTDOOR UNIT FEATURES

- Built-in base pan heater
- High Speed Start-up: High speed heating at start up: Hyper-Heating INVERTER[®] reduces the time for heating at start up by about half compared to standard models
- Hyper-Heating INVERTER[®]: Variable speed INVERTER-driven compressor
- Pre-charged refrigerant: volume for piping length up to 100 ft
- Pressure/temp protection
- Seacoast protection: components are rated for 2,000 hours of durability under ASTM B117 testing standards, ensuring longevity in corrosive coastal environments.
- Wide Heating Range: Wide heating range: heating performance down to -13°F (average of 80% heating capacity)

SPECIFICATIONS: PVA-AA30NL & PUZ-AK30NLHZ

Cooling at 95F ¹	Maximum Capacity	Btu/h	31,000
	Rated Capacity	Btu/h	30,000
	Minimum Capacity	Btu/h	12,600
	Maximum Power Input	W	2,300
	Rated Power Input	W	2,210
	Moisture Removal	Pints/h	6.6
	Sensible Heat Factor	-	0.76
Heating at 47F ²	Power Factor [208V / 230V]	%	91 / 91
	Maximum Capacity	Btu/h	34,000
	Rated Capacity	Btu/h	34,000
	Minimum Capacity	Btu/h	11,500
	Maximum Power Input	W	2,350
	Rated Power Input	W	2,350
Heating at 17F ³	Power Factor [208V / 230V]	%	92 / 92
	Maximum Capacity	Btu/h	32,000
	Rated Capacity	Btu/h	21,600
	Maximum Power Input	W	4,650
Heating at 5F ⁵	Rated Power Input	W	2,250
Heating at 5F ⁴	Maximum Capacity	Btu/h	32,000
Heating at -13F ⁹	Maximum Power Input	W	4,078
Efficiency	Maximum Capacity	Btu/h	21,000
	SEER2		21
	EER2 ¹		13.5
	HSPF2 [IV]		9.3
	COP at 47°F ²		4.2
	COP at 17°F at Maximum Capacity ³		2
	COP at 5°F at Maximum Capacity ⁴		2.3
Electrical	COP at -13°F at Maximum Capacity ⁸		1.84
	ENERGY STAR [®] Certified		Yes
	Voltage, Phase, Frequency	V AC / V AC, ϕ , Hz	208 / 230, 1, 60
	Guaranteed Voltage Range	V AC	198 - 253
	Voltage: Indoor - Outdoor, S1-S2	V AC	208/230
	Voltage: Indoor - Outdoor, S2-S3	V DC	12-24
	Short-circuit Current Rating [SCCR]	kA	5
	Recommended Fuse/Breaker Size (Outdoor)	A	30
	Recommended Wire Size [Indoor - Outdoor]	AWG	14
	MCA	A	4.13
Indoor Unit	Fan Motor Output	W	244
	Airflow Rate at Cooling, Dry	CFM	613, 744, 875
	Airflow Rate at Heating, Dry	CFM	613, 744, 875
	Sound Pressure Level [Cooling]	dB (A)	34, 40, 44
	External Static Pressure	in.WG	0.30, 0.50, 0.80
	Drain Pipe Size O.D.	inch [mm]	3/4 [19.05]
	External Finish Color		Galvanized steel cabinet-Powder coated Slate Gray
	Unit Dimensions (W x D x H)	inch x inch x inch [mm x mm x mm]	21 x 21-5/8 x 54-1/4 [534 x 548 x 1,378]
	Package Dimensions (W x D x H)	inch x inch x inch [mm x mm x mm]	22 x 28-11/16 x 61 [558 x 728 x 1,549]
	Unit Weight	lbs [kg]	141 [64]
Package Weight	lbs [kg]	163 [74]	
IDU Operating Temp. Range	Fan Motor Type		Direct-driven DC Brushless Motor
	Cooling Intake Air Temp [Maximum / Minimum]	°FDB, °FWB / °FDB, °FWB	90, 72 / 66, 61
	Heating Intake Air Temp [Maximum / Minimum]	°FDB	77 / 59
NOTES ¹ Cooling at 95°F (Indoor: 80°F DB, 67°F WB // Outdoor: 95°F DB, 75°F WB) ² Heating at 47°F (Indoor: 70°F DB, 60°F WB // Outdoor: 47°F DB, 43°F WB) ³ Heating at 17°F (Indoor: 70°F DB, 60°F WB // Outdoor: 17°F DB, 15°F WB) ⁴ Heating at 5°F (Indoor: 70°F DB, 60°F WB // Outdoor: 5°F DB, 4°F WB) ⁵ Heating at -13°F (Indoor: 70°F DB, 60°F WB // Outdoor: -13°F DB, -14°F WB) *Indoor/Outdoor Unit Operating Temperature Range (Cooling Air Temp [Maximum / Minimum]): • Wind baffles required to operate below 23°F DB in cooling mode. • Heat pump system with wind baffle: 0°F - 115°F. • Refer to wind baffle documentation for further information. ** Outdoor Unit Operating Temperature Range (Cooling Thermal Lock-out / Re-start Temperatures; Heating Thermal Lock-out / Re-start Temperatures): • System cuts out in heating mode and automatically restarts at these temperatures.			

SPECIFICATIONS: PVA-AA30NL & PUZ-AK30NLHZ

Outdoor Unit	MCA	A	29
	MOCP	A	48
	Fan Motor Output	W	74+74
	Airflow Rate Cooling	CFM	3,740
	Airflow Rate Heating	CFM	3,740
	Defrost Method		Reverse Cycle
	Coating on Heat Exchanger (Bluefin, Sea Coast)		Yes, Yes
	Sound Pressure Level, Cooling ¹	dB (A)	52
	Sound Pressure Level, Heating ²	dB (A)	53
	Compressor Type		Twin Rotary
	Compressor Model		MRK36FFGMC
	Compressor Oil [Type // Charge]	Type // oz	RM68EH // 45
	External Finish Color		Munsell No.3Y 7.8/1.1
	Base Pan Heater		Built-in
	Unit Dimensions (W x D x H)	inch x inch x inch [mm x mm x mm]	41-11/32 x 13-31/32 x 52-43/64 [1,050 x 355 x 1,338]
	Package Dimensions (W x D x H)	inch x inch x inch [mm x mm x mm]	42-15/16 x 17-3/4 x 58-5/16 [1,090 x 450 x 1,480]
	Unit Weight	lbs [kg]	231 [105]
	Package Weight	lbs [kg]	257.94 [117]
	ODU Operating Temp. Range	Cooling Intake Air Temp [Maximum / Minimum*]	°FDB
Heating Intake Air Temp [Maximum / Minimum]		°FDB, °FWB / °FDB, °FWB	70, 59 / -13, -13
Heating Thermal Lock-out / Re-start Temperatures**		°FDB	-22 / -13
Refrigerant	Type		R454B
	Pre-Charged Refrigerant Amount	lbs, oz	9, 14
	Maximum Pre-Charged Piping Length	ft [m]	100 [30]
	Additional Refrigerant Charge Per Additional Piping Length	oz/ft	0.6
Piping	Gas Pipe Size O.D. [Flared]	inch [mm]	5/8 [15.88]
	Liquid Pipe Size O.D. [Flared]	inch [mm]	3/8 [9.52]
	Maximum Piping Length	ft [m]	245 [75]
	Maximum Height Difference	ft [m]	100 [30]
	Maximum Number of Bends		15

NOTES

¹Cooling at 95°F (Indoor: 80°F DB, 67°F WB // Outdoor: 95°F DB, 75°F WB)

²Heating at 47°F (Indoor: 70°F DB, 60°F WB // Outdoor: 47°F DB, 43°F WB)

³Heating at 17°F (Indoor: 70°F DB, 60°F WB // Outdoor: 17°F DB, 15°F WB)

⁴Heating at 5°F (Indoor: 70°F DB, 60°F WB // Outdoor: 5°F DB, 4°F WB)

⁵Heating at -13°F (Indoor: 70°F DB, 60°F WB // Outdoor: -13°F DB, -14°F WB)

*Indoor/Outdoor Unit Operating Temperature Range (Cooling Air Temp [Maximum / Minimum]):

• Wind baffles required to operate below 23°F DB in cooling mode.

• Heat pump system with wind baffle: 0°F - 115°F.

• Refer to wind baffle documentation for further information.

** Outdoor Unit Operating Temperature Range (Cooling Thermal Lock-out / Re-start Temperatures; Heating Thermal Lock-out / Re-start Temperatures):

• System cuts out in heating mode and automatically restarts at these temperatures.

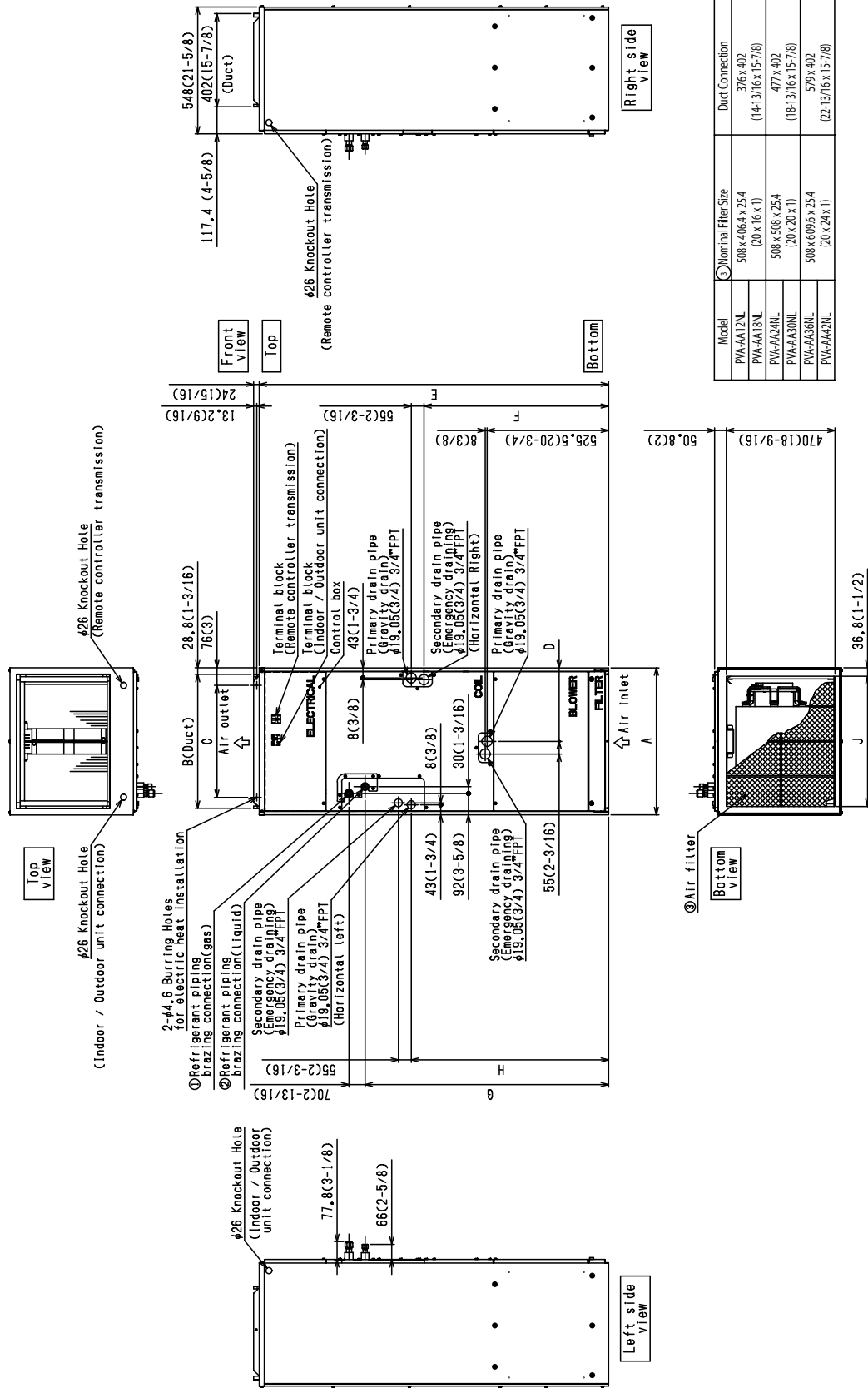
INDOOR UNIT ACCESSORIES: PVA-AA30NL

Control Interface	Airzone Wired Blueface Controller Black	AZZBSBLUEZEROCN
	Airzone Wired Blueface Controller White	AZZBSBLUEZEROCB
	Airzone Wired Lite Controller White	AZZBSLITECB
	Airzone Wireless Lite Controller White	AZZBSLITERB
	Airzone Wireless Think Controller Black	AZZBSTHINKRN
	Airzone Wireless Think Controller White	AZZBSTHINKRB
	IT Extender for kumo station	PAC-WHS01IE-E
	kumo station for the Comfort app	PAC-WHS01HC-E
	Operation and Error Status Output Adapter	PAC-SF40RM-E
	Procon BACnet and Modbus Interface	PAC-UKPRC001-CN-1
	Thermostat Interface for 3rd Party Thermostats	PAC-US445CN-1
	Wireless Interface Adapter for the Comfort app	PAC-USWHS002-WF-2
Wireless Remote Controller	Lockdown Bracket for Wireless Handheld Remote Controllers	RCMKP1CB
	RedLINK Wireless Remote Controller	MHK2
	Universal Wireless MA Handheld Remote Controller	PAR-FL32MA-E
	Universal Wireless Receiver for PAR-FL32MA-E	PAR-FA32MA-W
Power Supplies and Auxiliary Components	Backup Heat Relay Kit Adapter for CN24 or CN152 Connector	CN24RELAY-KIT-CM3
Terminal Block	Separate Terminal Power Block	SPTB1
Electric Kit Heats	10kW Electric Heater	EH10-MPA-MB
	3kW Electric Heater	EH03-MPA-MB
	5kW Electric Heater	EH05-MPA-MB
	8kW Electric Heater	EH08-MPA-MB
Disconnect Switch	30A600VUL fits 2 X 4 utility box - Black	TAZ-MS303
	30A600VUL fits 2 X 4 utility box - White	TAZ-MS303W
Remote Sensor	Flush Mount Remote Temperature Sensor for SEZ SLZ SVZ and all P-Series models	PAC-USSEN002-FM-1
	Wall Mount Remote Temperature Sensor	PAC-SE41TS-E
	Wireless temperature and humidity sensor for the Comfort app	PAC-USWHS003-TH-1
Lineset	10 x 3/8 x 10 x 5/8 Lineset Twin-Tube Insulation	MPLS385812T-10
	100 x 3/8 x 65 x 5/8 Lineset Twin-Tube Insulation	MPLS385812T-100
	15 x 3/8 x 15 x 5/8 Lineset Twin-Tube Insulation	MPLS385812T-15
	30 x 3/8 x 30 x 5/8 Lineset Twin-Tube Insulation	MPLS385812T-30
	50 x 3/8 x 50 x 5/8 Lineset Twin-Tube Insulation	MPLS385812T-50
	65 x 3/8 x 65 x 5/8 Lineset Twin-Tube Insulation	MPLS385812T-65
Wired Remote Controller	Deluxe Wired MA Remote Controller	PAR-42MAAUB
	Simple Direct Wired Remote Controller	PAC-SDW01RC-1
	Simple MA Remote Controller	PAC-YT53CRAU-J
	Touch MA Wired Remote Controller	PAR-CT01MAU-SB
Condensate	Blue Diamond Advanced Mini Condensate Pump w Reservoir Sensor 208230V recommended	X87-721
	Blue Diamond MaxiBlue Advanced Mini Condensate Pump w Reservoir Sensor 110V up to 48000 BTUH recommended	X87-711
	Blue Diamond MegaBlue Advanced Condensate Pump w Reservoir Sensor	X87-835
	Blue Diamond Sensor Extension Cable 15 Ft	C13-103
	Refco Condensate Pump 100-240 VAC up to 120000 BTUH	COMBI
	Sauermann Condensate Pump	SI30-230
Control Wire	202PR 1PR shielded 1PR plenum wire for Airzone 100 ft reel	CW2042S2-100
	202PR shielded 1PR plenum wire for Airzone 500 ft reel	CW2042S2-500
Downflow Kit	Condensate Management Kit for downflow installation	CMA-1
Power Supplies & Auxiliary Components	3-Pin Wiring Harness	PAC-715AD
	5-Pin Wiring Harness	PAC-725AD
	ERV On/Off Input Adapter for CNER on SVZ PEAD and PVA models	PAC-740
Electric Heat Lockout	Electric Heat Lockout	ETC-211020-MIT
NOTES *Requires MAC-334IF-E Interface to connect MA controller *Requires MAC-334IF-E Interface to connect MA controller *Unable to use with Wireless Handheld Remote Controller *Requires MAC-334IF-E Interface to connect MA controller *Requires MAC-334IF-E Interface to connect MA controller		

OUTDOOR UNIT ACCESSORIES: PUZ-AK30NLHZ

Air Outlet Guide	Air Outlet Guide 1 Piece	PAC-SH96SG-E (two pieces are required)
Mini-Split Wire	14 Gauge 4 wire Armored MiniSplit Cable250 ft roll	SW144-250
	14 Gauge 4 wire Armored MiniSplit Cable50 ft roll	SW144-50
	14 Gauge 4 wire MiniSplit Cable250 ft roll	S144-250
	14 Gauge 4 wire MiniSplit Cable50 ft roll	S144-50
M-NET Converter	M-Net Interface for P-Series	PAC-SJ95MA-E
Stand	18 Dual Fan Stand	QSMS1802M
	24 Dual Fan Stand	QSMS2402M
	Condenser Wall Bracket	QSWB2000M-1
	Condenser Wall Bracket - Stainless Steel Finish	QSWBSS
	Outdoor Unit 3-14 inch Mounting Base Pair - Plastic	DSD-400P
	Outdoor Unit Stand 12 High	QSMS1202M
Control/Service Tool	ControlService Tool	PAC-SK52ST
	M- & P-Series Maintenance Tool Cable Set	M21EC0397
	Maintenance Tool Interface	PAC-USCMS-MN-1
Drain Socket	Drain Socket	PAC-SG61DS-E
Hail Guards	Hail Guard	HG-A2
Power Supplies & Auxiliary Components	3-Pin Wiring Harness	PAC-715AD
	5-Pin Wiring Harness	PAC-725AD
Centralized Drain Pan	Centralized Drain Pan	PAC-SH97DP-E
Wind Baffle	Front Wind Baffle	WB-PA3 (two pieces are required)
Mounting Pad	Condensing Unit Mounting Pad 24 x 42 x 3	ULTRILITE2
Snow/Rain Diverter	SnowRain Diverter	SRD-5
NOTES		

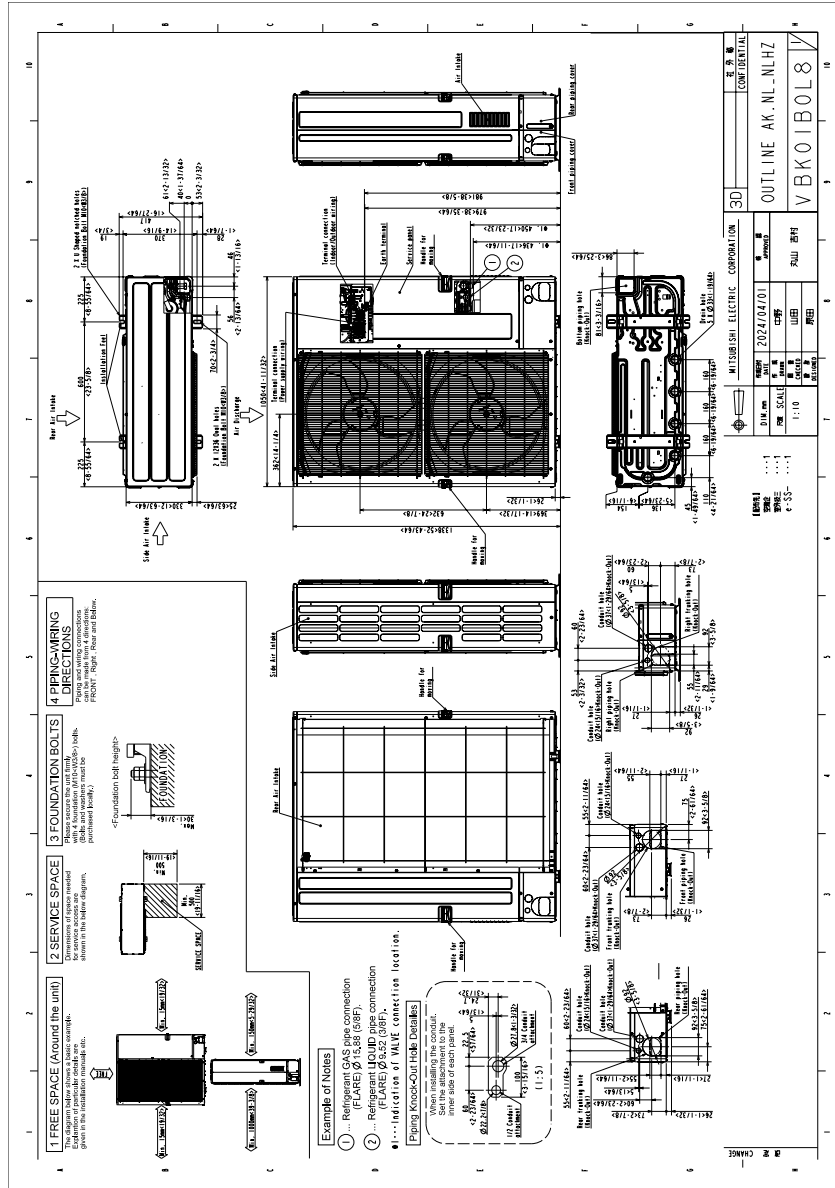
INDOOR UNIT DIMENSIONS: PVA-AA30NL



Model	Nominal Filter Size	Duct Connection
PVA-AA12NL	508 x 406 x 25.4 (20 x 16 x 1)	376 x 402 (14-13/16 x 15-7/8)
PVA-AA18NL	508 x 508 x 25.4 (20 x 20 x 1)	477 x 402 (18-13/16 x 15-7/8)
PVA-AA30NL	508 x 609.6 x 25.4 (20 x 24 x 1)	579 x 402 (22-13/16 x 15-7/8)

Model	A	B	C	D	E	F	G	H	J	Gas Pipe	Liquid Pipe
PVA-AA12NL	432 (17)	376 (14-13/16)	281 (11-1/8)	224 (8-7/8)	1275 (50-1/4)	680 (26-13/16)	823 (32-7/16)	735.5 (29)	360 (14-3/16)	12.7 (1/2)	6.35 (1/4)
PVA-AA18NL	534 (21)	477 (18-13/16)	382.6 (15-1/8)	269.5 (10-1/2)	1378 (54-1/4)	737 (29-1/16)	953.5 (37-9/16)	792 (31-3/16)	461 (18-3/16)		9.52 (3/8)
PVA-AA30NL	635 (25)	579 (22-13/16)	484.6 (19-1/8)	317.5 (12-1/2)	1511 (59-1/2)	798.5 (31-7/16)	1053 (41-1/2)	853.5 (33-5/8)	563 (22-3/16)		

OUTDOOR UNIT DIMENSIONS: PUZ-AK30NLHZ



1340 Satellite Boulevard Suwanee, GA 30024
Toll Free: 800-433-4822 <https://mitsubishicomfort.com>

