

PVA-AA24NL & PUZ-AH24NL
23,400 BTU/H MULTI-POSITION AIR HANDLER INDOOR UNIT
23,400 BTU/H HEAT PUMP OUTDOOR UNIT



Job Name:

System Reference:

Date:



Indoor Unit.....PVA-AA24NL

Outdoor Unit.....PUZ-AH24NL



INDOOR UNIT FEATURES

- Ducted air handler: Ducted air handler provides a solution to cool and heat large zones
- Enclosed ECM motor: Highly efficient totally enclosed ECM motor
- Fiberglass free insulation: 1 inch R4.2 fiberglass free insulation reduces condensation and boosts efficiency
- Light commercial: Units with this icon are suitable for light commercial applications such as small offices, restaurants, and retail.
- Multi-position installation: Multi-position installation: horizontal (left or right), vertical (up or down). For downflow configurations, the CMA-1 is recommended for proper management of condensate to prevent water blow-off in certain conditions
- Multiple control options, including the comfort app for remote access, third-party interfaces, and both wired and wireless controllers
- Optional electric heat kit: Optional electric heat kit for additional heat capacity
- Optional humidifier control and ERV control
- Positive pressure cabinet: Positive pressure cabinet with air leakage of less than 1.0% at 1.0 in.WG
- Selectable external static pressure: Selectable external static pressure: 0.30, 0.50 and 0.80 in.WG with 3 fan speeds at each static setting
- Single-zone: One outdoor unit connects to one indoor unit to control the comfort in a single space.
- Unique blow through design: Unique blow through design allows simple coil cleaning when the blower is removed

OUTDOOR UNIT FEATURES

- Blue Fin Coating: An anti-corrosion treatment applied to the aluminum fins of the heat exchanger of the outdoor unit to protect against corrosion caused by salt, sulfur, and other airborne contaminants, especially in coastal and industrial areas.
- Continuous operation: 24-hour continuous operation (cooling mode)
- Fast restart
- High pressure protection
- High pressure/temperature protection
- INVERTER-driven compressor: An inverter-driven compressor generates the precise capacity needed to maintain a temperature set point.
- Low ambient cooling : Low ambient cooling down to 0°F providing 100% capacity
- Pre-charged refrigerant: 12k -30k BTU/h come pre-charged for ease of installation. 24k – 30k BTU/h are pre-charged to maximum line length of 165 feet. 12k – 18k BTU/h are pre-charged for up to 100 feet of line length. For units with a capacity of 36,000 BTU/h and above, additional refrigerant charges will be required.
- Seacoast protection: Seacoast Protection, made standard in the 2022 production, features a robust anti-corrosion system with phosphate and acrylic-enamel coated external panels, epoxy resin-coated fan motor support and separator assembly valve beds, and Blue Fin treatment for the heat exchanger coil. These components are rated for 2,000 hours of durability under ASTM B117 testing standards, ensuring longevity in corrosive coastal environments.
- Superior energy and operational efficiency

SPECIFICATIONS: PVA-AA24NL & PUZ-AH24NL

Cooling at 95F ¹	Maximum Capacity	Btu/h	24,000
	Rated Capacity	Btu/h	23,400
	Minimum Capacity	Btu/h	10,200
	Maximum Power Input	W	2,040
	Rated Power Input	W	1,940
	Moisture Removal	Pints/h	3
	Sensible Heat Factor	-	0.86
Heating at 47F ²	Power Factor [208V / 230V]	%	90 / 90
	Maximum Capacity	Btu/h	31,800
	Rated Capacity	Btu/h	28,000
	Minimum Capacity	Btu/h	8,400
	Maximum Power Input	W	2,540
	Rated Power Input	W	2,217
Heating at 17F ³	Power Factor [208V / 230V]	%	91 / 91
	Maximum Capacity	Btu/h	15,200
	Rated Capacity	Btu/h	15,200
	Maximum Power Input	W	1,650
Heating at 5F ⁴	Rated Power Input	W	1,650
	Maximum Capacity	Btu/h	11,500
Heating at -4F ⁵	Maximum Power Input	W	1,872
	Maximum Capacity	Btu/h	10,300
Efficiency	SEER2		19.2
	EER2 ¹		12
	HSPF2 [IV]		8.9
	COP at 47°F ²		3.7
	COP at 17°F at Maximum Capacity ³		2.6
	COP at 5°F at Maximum Capacity ⁴		1.8
	COP at -4°F at Maximum Capacity ⁵		1.74
	ENERGY STAR [®] Certified		Yes
Electrical	Voltage, Phase, Frequency	V AC / V AC, ϕ , Hz	208 / 230, 1, 60
	Guaranteed Voltage Range	V AC	198 - 253
	Voltage: Indoor - Outdoor, S1-S2	V AC	208/230
	Voltage: Indoor - Outdoor, S2-S3	V DC	12-24
	Short-circuit Current Rating [SCCR]	kA	5
	Recommended Fuse/Breaker Size (Outdoor)	A	25
	Recommended Wire Size [Indoor - Outdoor]	AWG	14
Indoor Unit	MCA	A	4.13
	Fan Motor Output	W	244
	Airflow Rate at Cooling, Dry	CFM	613, 744, 875
	Airflow Rate at Heating, Dry	CFM	613, 744, 875
	Sound Pressure Level [Cooling]	dB (A)	34, 40, 44
	Sound Pressure Level [Heating]	dB (A)	34, 40, 44
	External Static Pressure	in.WG	0.30, 0.50, 0.80
	Drain Pipe Size O.D.	inch [mm]	3/4 [19.05]
	External Finish Color		Galvanized steel cabinet-Powder coated Slate Gray
	Unit Dimensions (W x D x H)	inch x inch x inch [mm x mm x mm]	21 x 21-5/8 x 54-1/4 [534 x 548 x 1,378]
	Package Dimensions (W x D x H)	inch x inch x inch [mm x mm x mm]	22 x 28-11/16 x 61 [558 x 728 x 1,549]
	Unit Weight	lbs [kg]	141 [64]
	Package Weight	lbs [kg]	163 [74]
Fan Motor Type		Direct-driven DC Brushless Motor	
IDU Operating Temp. Range	Cooling Intake Air Temp [Maximum / Minimum]	°FDB, °FWB / °FDB, °FWB	90, 72 / 66, 61
	Heating Intake Air Temp [Maximum / Minimum]	°FDB	77 / 59

NOTES

¹Cooling at 95°F (Indoor: 80°F DB, 67°F WB // Outdoor: 95°F DB, 75°F WB)

²Heating at 47°F (Indoor: 70°F DB, 60°F WB // Outdoor: 47°F DB, 43°F WB)

³Heating at 17°F (Indoor: 70°F DB, 60°F WB // Outdoor: 17°F DB, 15°F WB)

⁴Heating at 5°F (Indoor: 70°F DB, 60°F WB // Outdoor: 5°F DB, 4°F WB)

⁵Heating at -4°F (Indoor: 70°F DB, 60°F WB // Outdoor: -4°F DB, -5°F WB)

*Indoor/Outdoor Unit Operating Temperature Range (Cooling Air Temp [Maximum / Minimum]):

• Wind baffles required to operate below 23°F DB in cooling mode.

• Heat pump system with wind baffle: 0°F - 115°F.

• Refer to wind baffle documentation for further information.

** Outdoor Unit Operating Temperature Range (Cooling Thermal Lock-out / Re-start Temperatures; Heating Thermal Lock-out / Re-start Temperatures):

• System cuts out in heating mode and automatically restarts at these temperatures.

SPECIFICATIONS: PVA-AA24NL & PUZ-AH24NL

Outdoor Unit	MCA	A	22	
	MOCP	A	37	
	Fan Motor Output	W	74	
	Airflow Rate Cooling	CFM	1,940	
	Airflow Rate Heating	CFM	1,940	
	Defrost Method		Reverse Cycle	
	Coating on Heat Exchanger (Bluefin, Sea Coast)		Yes, Yes	
	Sound Pressure Level, Cooling ¹	dB (A)	49	
	Sound Pressure Level, Heating ²	dB (A)	52	
	Compressor Type		Twin Rotary	
	Compressor Model		SRB172FQHMC-L1	
	Compressor Oil [Type // Charge]	Type // oz	RM68EH // 23	
	External Finish Color		Munsell 3Y 7.8/1.1	
	Base Pan Heater		Optional	
	Unit Dimensions (W x D x H)	inch x inch x inch [mm x mm x mm]	34-19/16 x 14 x 37-1/8 [950 x 355 x 943]	
	Package Dimensions (W x D x H)	inch x inch x inch [mm x mm x mm]	41-15/16 x 17-3/4 x 42-1/2 [1,065 x 450 x 1,079]	
	Unit Weight	lbs [kg]	155 [70]	
	Package Weight	lbs [kg]	178.57 [81]	
	ODU Operating Temp. Range	Cooling Intake Air Temp [Maximum / Minimum*]	°FDB	115 / 23
		Heating Intake Air Temp [Maximum / Minimum]	°FDB, °FWB / °FDB, °FWB	70, 59 / -4, -4
Heating Thermal Lock-out / Re-start Temperatures**		°FDB	-13 / -4	
Refrigerant	Type		R454B	
	Pre-Charged Refrigerant Amount	lbs, oz	7, 11	
	Maximum Pre-Charged Piping Length	ft [m]	165 [50]	
Piping	Gas Pipe Size O.D. [Flared]	inch [mm]	5/8 [15.88]	
	Liquid Pipe Size O.D. [Flared]	inch [mm]	3/8 [9.52]	
	Maximum Piping Length	ft [m]	165 [50]	
	Maximum Height Difference	ft [m]	100 [30]	
	Maximum Number of Bends		15	

NOTES

¹Cooling at 95°F (Indoor: 80°F DB, 67°F WB // Outdoor: 95°F DB, 75°F WB)

²Heating at 47°F (Indoor: 70°F DB, 60°F WB // Outdoor: 47°F DB, 43°F WB)

³Heating at 17°F (Indoor: 70°F DB, 60°F WB // Outdoor: 17°F DB, 15°F WB)

⁴Heating at 5°F (Indoor: 70°F DB, 60°F WB // Outdoor: 5°F DB, 4°F WB)

⁵Heating at -4°F (Indoor: 70°F DB, 60°F WB // Outdoor: -4°F DB, -5°F WB)

*Indoor/Outdoor Unit Operating Temperature Range (Cooling Air Temp [Maximum / Minimum]):

• Wind baffles required to operate below 23°F DB in cooling mode.

• Heat pump system with wind baffle: 0°F - 115°F.

• Refer to wind baffle documentation for further information.

** Outdoor Unit Operating Temperature Range (Cooling Thermal Lock-out / Re-start Temperatures; Heating Thermal Lock-out / Re-start Temperatures):

• System cuts out in heating mode and automatically restarts at these temperatures.

INDOOR UNIT ACCESSORIES: PVA-AA24NL

Wireless Remote Controller	Deluxe Wired MA Remote Controller	PAR-42MAAUB
	Lockdown Bracket for Wireless Handheld Remote Controllers	RCMKP1CB
	RedLINK Wireless Remote Controller	MHK2
	Universal Wireless MA Handheld Remote Controller	PAR-FL32MA-E
	Universal Wireless Receiver for PAR-FL32MA-E	PAR-FA32MA-W
Control Interface	Airzone Wired Blueface Controller White	AZZBSBLUEZEROCN
	Airzone Wired Blueface Controller White	AZZBSBLUEZEROCB
	Airzone Wired Lite Controller White	AZZBSLITECB
	Airzone Wireless Lite Controller White	AZZBSLITERB
	Airzone Wireless Think Controller White	AZZBSTHINKRN
	Airzone Wireless Think Controller White	AZZBSTHINKRB
	kumo station for the Comfort app	PAC-WHS01HC-E
	Operation and Error Status Output Adapter ¹	PAC-SF40RM-E
	Procon BACnet and Modbus Interface	PAC-UKPRC001-CN-1
	Thermostat Interface for 3rd Party Thermostats	PAC-US445CN-1
Wireless Interface Adapter for the Comfort app	PAC-USWHS002-WF-2	
Condensate	Blue Diamond Advanced Mini Condensate Pump w Reservoir Sensor 208230V recommended	X87-721
	Blue Diamond MaxiBlue Advanced Mini Condensate Pump w Reservoir Sensor 110V up to 48000 BTUH recommended	X87-711
	Blue Diamond MegaBlue Advanced Condensate Pump w Reservoir Sensor	X87-835
	Blue Diamond Sensor Extension Cable 15 Ft	C13-103
	Refco Condensate Pump 100-240 VAC up to 120000 BTUH	COMBI
Wired Remote Controller	Simple Direct Wired Remote Controller	PAC-SDW01RC-1
	Simple MA Remote Controller ¹	PAC-YT53CRAU-J
	Touch MA Wired Remote Controller ¹	PAR-CT01MAU-SB
Power Supplies & Auxiliary Components	3-Pin Wiring Harness	PAC-715AD
	5-Pin Wiring Harness	PAC-725AD
	ERV On/Off Input Adapter for CNER on SVZ PEAD and PVA models	PAC-740
Remote Sensor	Flush Mount Remote Temperature Sensor for SEZ SLZ SVZ and all P-Series models	PAC-USSEN002-FM-1
	Wall Mount Remote Temperature Sensor	PAC-SE41TS-E
	Wireless temperature and humidity sensor for the Comfort app	PAC-USWHS003-TH-1
Lineset	10 x 3/8 x 10 x 5/8 Lineset Twin-Tube Insulation	MPLS385812T-10
	100 x 3/8 x 100 x 5/8 Lineset Twin-Tube Insulation	MPLS385812T-100
	15 x 3/8 x 15 x 5/8 Lineset Twin-Tube Insulation	MPLS385812T-15
	30 x 3/8 x 30 x 5/8 Lineset Twin-Tube Insulation	MPLS385812T-30
	50 x 3/8 x 50 x 5/8 Lineset Twin-Tube Insulation	MPLS385812T-50
	65 x 3/8 x 65 x 5/8 Lineset Twin-Tube Insulation	MPLS385812T-65
Power Supplies and Auxiliary Components	Backup Heat Relay Kit Adapter for CN24 or CN152 Connector	CN24RELAY-KIT-CM3
Disconnect Switch	30A600VUL fits 2 X 4 utility box - Black	TAZ-MS303
	30A600VUL fits 2 X 4 utility box - White	TAZ-MS303W
Downflow Kit	Condensate Management Kit for downflow installation	CMA-1
Electric Kit Heats	10kW Electric Heater	EH10-MPA-MB
	3kW Electric Heater	EH03-MPA-MB
	5kW Electric Heater	EH05-MPA-MB
	8kW Electric Heater	EH08-MPA-MB
Electric Heat Lockout	Electric Heat Lockout	ETC-211020-MIT
Control Wire	202PR 1PR shielded 1PR plenum wire for Airzone 100 ft reel	CW2042S2-100
	202PR shielded 1PR plenum wire for Airzone 500 ft reel	CW2042S2-500
Terminal Block	Separate Terminal Power Block	SPTB1
NOTES		
¹ Unable to use with Wireless Handheld Remote Controller		

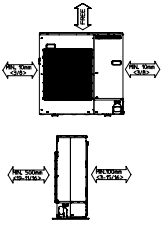
OUTDOOR UNIT ACCESSORIES: PUZ-AH24NL

Wind Baffle	Front Wind Baffle	WB-PA5
	Rear Wind Baffle	WB-RE5
	Side Advanced Wind Baffle	WB-SD5
Drain Socket	Drain Socket	PAC-SG61DS-E
Air Outlet Guide	Air Outlet Guide 1 Piece	PAC-SG59SG-E
Stand	18 Single Fan Stand	QSMS1801M
	24 Single Fan Stand	QSMS2401M
	Condenser Wall Bracket - Stainless Steel Finish	QSWBSS
	Condenser Wall Bracket	QSWB2000M-1
	Outdoor Unit 3-14 inch Mounting Base Pair - Plastic	DSD-400P
Power Supplies & Auxiliary Components	Outdoor Unit Stand 12 High	QSMS1201M
	3-Pin Wiring Harness	PAC-715AD
Control/Service Tool	5-Pin Wiring Harness	PAC-725AD
	ControlService Tool	PAC-SK52ST
Snow/Rain Diverter	M- & P-Series Maintenance Tool Cable Set	M21EC0397
	SnowRain Diverter	SRD-4
Hail Guards	Hail Guard	HG-A6
Mounting Pad	Condensing Unit Mounting Pad 24 x 42 x 3	ULTRILITE2
Mini-Split Wire	14 Gauge 4 wire Armored MiniSplit Cable250 ft roll	SW144-250
	14 Gauge 4 wire Armored MiniSplit Cable50 ft roll	SW144-50
	14 Gauge 4 wire MiniSplit Cable250 ft roll	S144-250
	14 Gauge 4 wire MiniSplit Cable50 ft roll	S144-50
M-NET Converter	M-Net Interface for P-Series	PAC-SJ95MA-E
Optional Defrost Heater	Optional Defrost Heater	PAC-SK62BH-E
Centralized Drain Pan	Drain Pan	PAC-SG64DP-E
NOTES		

OUTDOOR UNIT DIMENSIONS: PUZ-AH24NL

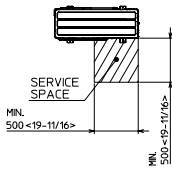
1 FREE SPACE (AROUND THE UNIT)

THE DIAGRAM BELOW SHOWS A BASIC EXAMPLE. EXPLANATION OF PARTICULAR DETAILS ARE GIVEN IN THE INSTALLATION MANUALS ETC.



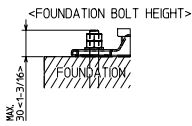
2 SERVICE SPACE

DIMENSIONS OF SPACE NEEDED FOR SERVICE ACCESS ARE SHOWN IN THE BELOW DIAGRAM.



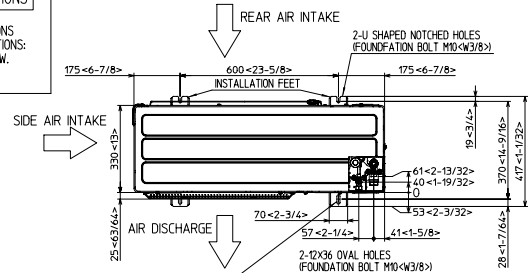
3 FOUNDATION BOLTS

PLEASE SECURE THE BASE OF THE UNIT FIRMLY USING M10\timesW3/8\times FOUNDATION BOLTS AT FOUR PLACES WITH DOUBLE NUTS. BOLTS, WASHERS AND NUT MUST BE PURCHASED LOCALLY.



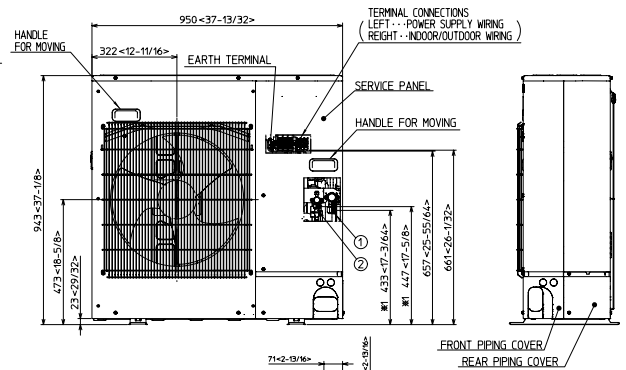
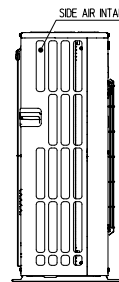
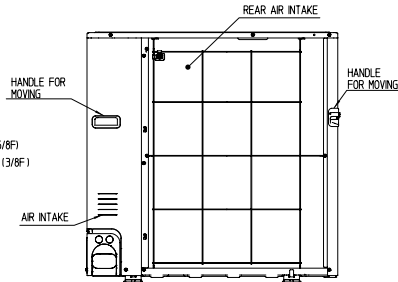
4 PIPING-WIRING DIRECTIONS

PIPING AND WIRING CONNECTIONS CAN BE MADE FROM 4 DIRECTIONS: FRONT, RIGHT, REAR AND BELOW.

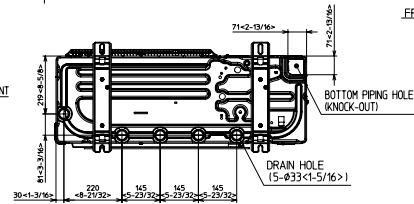
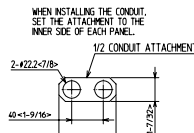
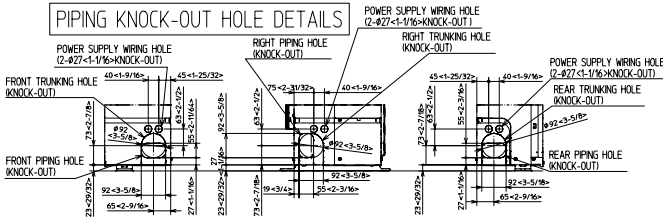


EXAMPLE OF NOTES

- ① --- REFRIGERANT GAS PIPE CONNECTION (FLARE) #15.88 (5/8F)
- ② --- REFRIGERANT LIQUID PIPE CONNECTION (FLARE) # 9.52 (3/8F)
- 1 --- INDICATION OF STOP VALVE CONNECTION LOCATION.



PIPING KNOCK-OUT HOLE DETAILS



1340 Satellite Boulevard Suwanee, GA 30024
Toll Free: 800-433-4822 <https://mitsubishicomfort.com>