

PAA-BA30NL & PUZ-AH30NL
31,000 BTU/H CASED COIL INDOOR UNIT
31,000 BTU/H HEAT PUMP OUTDOOR UNIT



Job Name:

System Reference:

Date:



Indoor Unit.....PAA-BA30NL

Outdoor Unit.....PUZ-AH30NL



INDOOR UNIT FEATURES

- Available Widths: Available in 14.5", 17.5", and 21" widths
- Control Compatibility: Compatible with any thermostatically controlled (24VAC) natural gas or LP furnace*
- Flared piping connection
- Furnace Compatible: Compatible with any thermostatically controlled gas furnace, intelli-HEAT® allows for Intelligent Switchover between the furnace and heat pump.*

*Mitsubishi Electric air-conditioner and heat pump systems should only be connected with ANSI-Z21.47/CSA2.3 certified furnaces

- High quality drain pan: High quality drain pan material with high heat tolerance and low moisture absorption
- Included components: Includes cased coil and control box
- Intelligent Switchover: The intelli-HEAT® Intelligent Switchover function automatically switches from the all-electric heat pump heating to the gas furnace based on the ambient temperature to optimize economic and lower carbon footprint priorities. When indoor temperatures are not maintained for 24-29 minutes due to extreme cold, the system switches to the gas furnace heating automatically to ensure consistent comfort.
- Multi-position installation: Versatile installation options, including horizontal (left or right) and vertical (up or down) orientations, with included drain pans to facilitate easy setup for any configuration.
- Multi-zone: A multi-zone unit provides the temperature management of multiple zones within a building.
- Multiple control options, including the comfort app for remote access, third-party interfaces, and both wired and wireless controllers
- Optimized heat exchange: Optimized heat exchanger design for increased efficiency and longevity
- Optional humidifier control and ERV control
- Oxygen free copper coils

OUTDOOR UNIT FEATURES

- Blue Fin Coating: An anti-corrosion treatment applied to the aluminum fins of the heat exchanger of the outdoor unit to protect against corrosion caused by salt, sulfur, and other airborne contaminants, especially in coastal and industrial areas.
- Continuous operation: 24-hour continuous operation (cooling mode)
- Fast restart
- High pressure protection
- High pressure/temperature protection
- INVERTER-driven compressor: An inverter-driven compressor generates the precise capacity needed to maintain a temperature set point.
- Low ambient cooling : Low ambient cooling down to 0°F providing 100% capacity
- Pre-charged refrigerant: 12k -30k BTU/h come pre-charged for ease of installation. 24k – 30k BTU/h are pre-charged to maximum line length of 165 feet. 12k – 18k BTU/h are pre-charged for up to 100 feet of line length. For units with a capacity of 36,000 BTU/h and above, additional refrigerant charges will be required.
- Seacoast protection: Seacoast Protection, made standard in the 2022 production, features a robust anti-corrosion system with phosphate and acrylic-enamel coated external panels, epoxy resin-coated fan motor support and separator assembly valve beds, and Blue Fin treatment for the heat exchanger coil. These components are rated for 2,000 hours of durability under ASTM B117 testing standards, ensuring longevity in corrosive coastal environments.
- Superior energy and operational efficiency

SPECIFICATIONS: PAA-BA30NL & PUZ-AH30NL

Cooling at 95F ¹	Maximum Capacity	Btu/h	31,500
	Rated Capacity	Btu/h	31,000
	Minimum Capacity	Btu/h	10,100
	Maximum Power Input	W	3,200
	Rated Power Input	W	3,130
	Moisture Removal	Pints/h	7.7
	Sensible Heat Factor	-	0.73
Heating at 47F ²	Power Factor [208V / 230V]	%	89 / 89
	Maximum Capacity	Btu/h	35,400
	Rated Capacity	Btu/h	35,400
	Minimum Capacity	Btu/h	10,100
	Maximum Power Input	W	2,880
	Rated Power Input	W	2,880
	Power Factor [208V / 230V]	%	89 / 89
Heating at 17F ³	Maximum Capacity	Btu/h	20,400
	Rated Capacity	Btu/h	20,400
	Maximum Power Input	W	2,300
	Rated Power Input	W	2,300
Heating at 5F ⁵	Maximum Capacity	Btu/h	15,300
	Maximum Power Input	W	2,140
Heating at -4F ⁶	Maximum Capacity	Btu/h	13,700
Efficiency	SEER2		16.1
	EER2 ¹		9.9
	HSPF2 [IV]		8.9
	COP at 47°F ²		3.6
	COP at 17°F at Maximum Capacity ³		2.6
	COP at 5°F at Maximum Capacity ⁵		2.1
	COP at -4°F at Maximum Capacity ⁶		2.02
Electrical	ENERGY STAR® Certified		No
	Voltage, Phase, Frequency	V AC / V AC, ø, Hz	208 / 230, 1, 60
	Guaranteed Voltage Range	V AC	198 - 253
	Voltage: Indoor - Outdoor, S1-S2	V AC	208/230
	Voltage: Indoor - Outdoor, S2-S3	V DC	12-24
	Short-circuit Current Rating [SCCR]	kA	5
	Recommended Fuse/Breaker Size (Outdoor)	A	25
Indoor Unit	Recommended Wire Size [Indoor - Outdoor]	AWG	14
	MCA	A	0.2
	Rated Airflow, Dry	CFM	875
	Maximum Airflow, Dry	CFM	1,024
	Minimum Airflow, Dry	CFM	700
	Internal Static Pressure [at Rated CFM]	in.WG	0.2
	Drain Pipe Size O.D.	inch [mm]	3/4 [19.05]
	External Finish Color		Galvanized Steel
	Unit Dimensions (W x D x H)	inch x inch x inch [mm x mm x mm]	17-9/16 x 21-7/16 x 27-1/2 [445 x 543 x 697]
	Package Dimensions (W x D x H)	inch x inch x inch [mm x mm x mm]	19-5/16 x 25-5/16 x 33 [491 x 695 x 838]
	Unit Weight [Cased Coil Only]	lbs [kg]	63.9 [29.0]
	Control Box Weight	lbs [kg]	5.1 [2.3]
	Package Weight	lbs [kg]	87.1 [39.5]
IDU Operating Temp. Range	Cooling Intake Air Temp [Maximum / Minimum]	°FDB, °FWB / °FDB, °FWB	90, 73 / 66, 59
	Heating Intake Air Temp [Maximum / Minimum]	°FDB	83 / 50

NOTES

¹Cooling at 95°F (Indoor: 80°F DB, 67°F WB // Outdoor: 95°F DB, 75°F WB)

²Heating at 47°F (Indoor: 70°F DB, 60°F WB // Outdoor: 47°F DB, 43°F WB)

³Heating at 17°F (Indoor: 70°F DB, 60°F WB // Outdoor: 17°F DB, 15°F WB)

⁴Heating at 5°F (Indoor: 70°F DB, 60°F WB // Outdoor: 5°F DB, 4°F WB)

⁵Heating at -4°F (Indoor: 70°F DB, 60°F WB // Outdoor: -4°F DB, -5°F WB)

⁶Indoor/Outdoor Unit Operating Temperature Range (Cooling Air Temp [Maximum / Minimum]):

• Wind baffles required to operate below 23°F DB in cooling mode.

• Heat pump system with wind baffle: 0°F - 115°F.

• Refer to wind baffle documentation for further information.

** Outdoor Unit Operating Temperature Range (Cooling Thermal Lock-out / Re-start Temperatures; Heating Thermal Lock-out / Re-start Temperatures):

• System cuts out in heating mode and automatically restarts at these temperatures.

SPECIFICATIONS: PAA-BA30NL & PUZ-AH30NL

Outdoor Unit	MCA	A	22
	MOCP	A	37
	Fan Motor Output	W	74
	Airflow Rate Cooling	CFM	1,940
	Airflow Rate Heating	CFM	1,940
	Defrost Method		Reverse Cycle
	Coating on Heat Exchanger (Bluefin, Sea Coast)		Yes, Yes
	Sound Pressure Level, Cooling ¹	dB (A)	49
	Sound Pressure Level, Heating ²	dB (A)	52
	Compressor Type		Twin Rotary
	Compressor Model		SRB172FQHMC-L1
	Compressor Oil [Type // Charge]	Type // oz	RM68EH // 23
	External Finish Color		Munsell No.3Y 7.8/1.1
	Base Pan Heater		Optional
	Unit Dimensions (W x D x H)	inch x inch x inch [mm x mm x mm]	37-13/32 x 14 x 37-1/8 [950 x 355 x 943]
	Package Dimensions (W x D x H)	inch x inch x inch [mm x mm x mm]	41-15/16 x 17-3/4 x 42-1/2 [1,065 x 450 x 1,079]
	Unit Weight	lbs [kg]	155 [70]
	Package Weight	lbs [kg]	179 [81]
ODU Operating Temp. Range	Cooling Intake Air Temp [Maximum / Minimum*]	°FDB	115 / 23
	Heating Intake Air Temp [Maximum / Minimum]	°FDB, °FWB / °FDB, °FWB	70, 59 / -4, -4
	Heating Thermal Lock-out / Re-start Temperatures**	°FDB	-13 / -4
Refrigerant	Type		R454B
	Pre-Charged Refrigerant Amount	lbs, oz	7, 11
	Maximum Pre-Charged Piping Length	ft [m]	100 [30]
Piping	Gas Pipe Size O.D. [Flared]	inch [mm]	5/8 [15.88]
	Liquid Pipe Size O.D. [Flared]	inch [mm]	3/8 [9.52]
	Maximum Piping Length	ft [m]	165 [50]
	Maximum Height Difference	ft [m]	100 [30]
	Maximum Number of Bends		15

NOTES

¹Cooling at 95°F (Indoor: 80°F DB, 67°F WB // Outdoor: 95°F DB, 75°F WB)

²Heating at 47°F (Indoor: 70°F DB, 60°F WB // Outdoor: 47°F DB, 43°F WB)

³Heating at 17°F (Indoor: 70°F DB, 60°F WB // Outdoor: 17°F DB, 15°F WB)

⁴Heating at 5°F (Indoor: 70°F DB, 60°F WB // Outdoor: 5°F DB, 4°F WB)

⁵Heating at -4°F (Indoor: 70°F DB, 60°F WB // Outdoor: -4°F DB, -5°F WB)

*Indoor/Outdoor Unit Operating Temperature Range (Cooling Air Temp [Maximum / Minimum]):

• Wind baffles required to operate below 23°F DB in cooling mode.

• Heat pump system with wind baffle: 0°F - 115°F.

• Refer to wind baffle documentation for further information.

** Outdoor Unit Operating Temperature Range (Cooling Thermal Lock-out / Re-start Temperatures; Heating Thermal Lock-out / Re-start Temperatures):

• System cuts out in heating mode and automatically restarts at these temperatures.

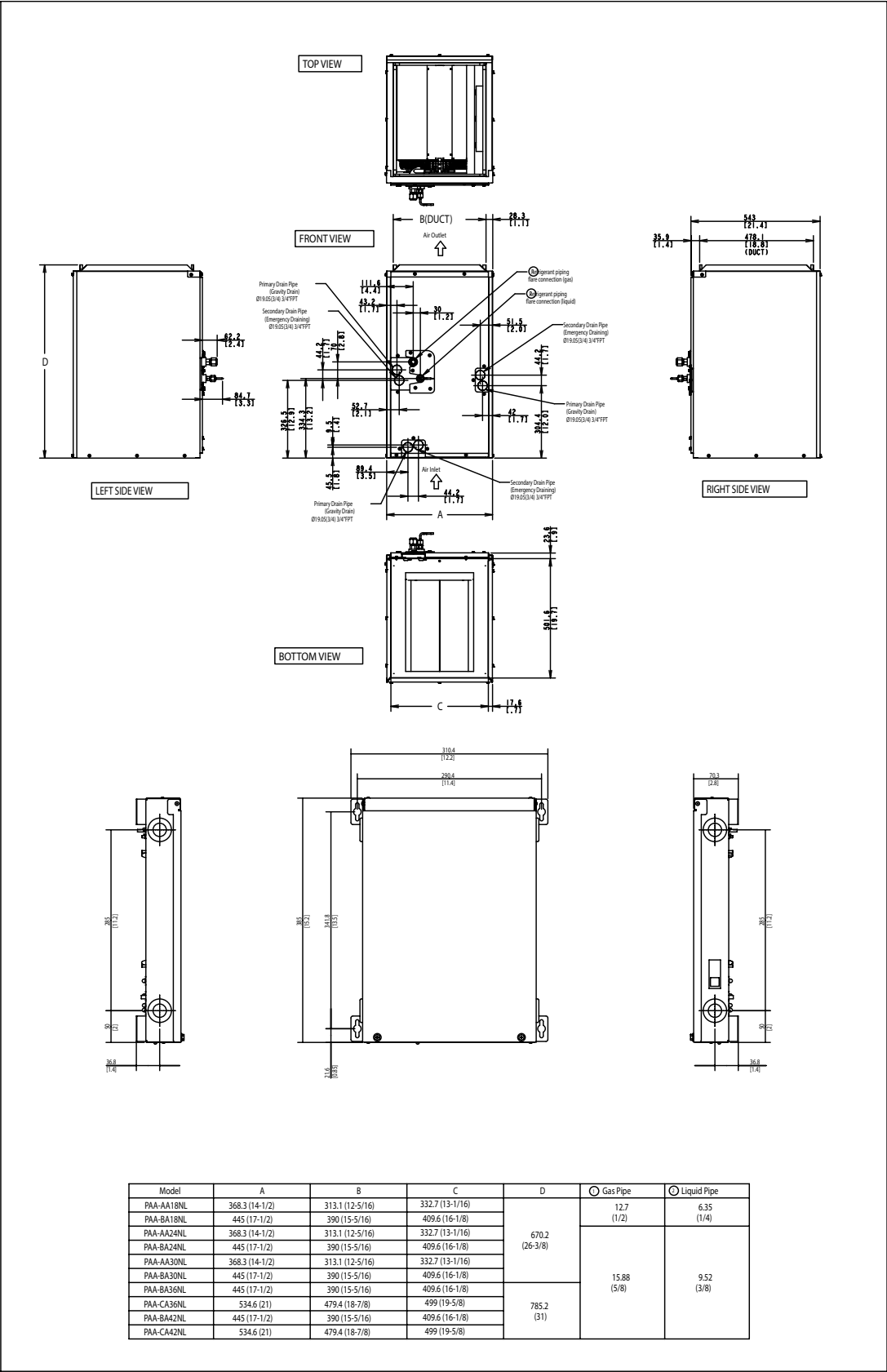
INDOOR UNIT ACCESSORIES: PAA-BA30NL

Wired Remote Controller	Deluxe MA Wired Remote Controller	PAR-42MAAUB
	Simple Direct Wired Remote Controller	PAC-SDW01RC-1
	Simple MA Remote Controller	PAC-YT53CRAU-J
	Touch MA Wired Remote Controller	PAR-CT01MAU-SB
Control Interface	IT Extender for kumo station	PAC-WHS01IE-E
	kumo station for the Comfort app	PAC-WHS01HC-E
	Operation and Error Status Output Adapter ¹	PAC-SF40RM-E
	Procon BACnet and Modbus Interface	PAC-UKPRC001-CN-1
	Thermostat Interface for 3rd Party Thermostats	PAC-US445CN-1
	Wireless Interface Adapter for the Comfort app	PAC-USWHS002-WF-2
Wireless Remote Controller	Lockdown Bracket for Wireless Handheld Remote Controllers	RCMKP1CB
	RedLINK Wireless Remote Controller	MHK2
	Universal Wireless MA Handheld Remote Controller	PAR-SL101A-E
	Universal Wireless Receiver for PAR-FL32MA-E	PAR-FA32MA-W
	Universal Wireless Receiver for PAR-FL32MA-E	PAR-FA32MA-E
Condensate	Blue Diamond Advanced Mini Condensate Pump w Reservoir Sensor 208230V recommended	X87-721
	Blue Diamond MaxiBlue Advanced Mini Condensate Pump w Reservoir Sensor 110V up to 48000 BTUH recommended	X87-711
	Blue Diamond MegaBlue Advanced Condensate Pump w Reservoir Sensor	X87-835
	Blue Diamond MegaBlue Advanced Condensate Pump w Reservoir Sensor	SI30-230
	Blue Diamond Sensor Extension Cable 15 Ft	C13-103
	Refco Condensate Pump 100-240 VAC up to 120000 BTUH	COMBI
Lineset	10 x 3/8 x 10 x 5/8 Lineset Twin-Tube Insulation	MPLS385812T-10
	100 x 3/8 x 100 x 5/8 Lineset Twin-Tube Insulation	MPLS385812T-100
	15 x 3/8 x 15 x 5/8 Lineset Twin-Tube Insulation	MPLS385812T-15
	30 x 3/8 x 30 x 5/8 Lineset Twin-Tube Insulation	MPLS385812T-30
	50 x 3/8 x 50 x 5/8 Lineset Twin-Tube Insulation	MPLS385812T-50
	65 x 3/8 x 65 x 5/8 Lineset Twin-Tube Insulation	MPLS385812T-65
Remote Sensor	Flush Mount Remote Temperature Sensor for SEZ SLZ SVZ and all P-Series models	PAC-USSEN002-FM-1
	Wall Mount Remote Temperature Sensor	PAC-SE41TS-E
	Wireless temperature and humidity sensor for the Comfort app	PAC-USWHS003-TH-1
Disconnect Switch	30A600VUL fits 2 X 4 utility box - Black	TAZ-MS303
	30A600VUL fits 2 X 4 utility box - White	TAZ-MS303W
Power Supplies and Auxiliary Components	Backup Heat Relay Kit Adapter for CN24 or CN152 Connector	CN24RELAY-KIT-CM3
Power Supplies & Auxiliary Components	3-Pin Wiring Harness	PAC-715AD
	5-Pin Wiring Harness	PAC-725AD
	ERV On/Off Input Adapter for CNER on SVZ PEAD and PVA models	PAC-740
NOTES		

OUTDOOR UNIT ACCESSORIES: PUZ-AH30NL

Power Supplies & Auxiliary Components	3-Pin Wiring Harness	PAC-715AD
	5-Pin Wiring Harness	PAC-725AD
Mini-Split Wire	14 Gauge 4 wire Armored MiniSplit Cable250 ft roll	SW144-250
	14 Gauge 4 wire Armored MiniSplit Cable50 ft roll	SW144-50
	14 Gauge 4 wire MiniSplit Cable250 ft roll	S144-250
	14 Gauge 4 wire MiniSplit Cable50 ft roll	S144-50
Stand	18 Single Fan Stand	QSMS1801M
	24 Single Fan Stand	QSMS2401M
	Condenser Wall Bracket	QSWB2000M-1
	Condenser Wall Bracket - Stainless Steel Finish	QSWBSS
	Outdoor Unit 3-14 inch Mounting Base Pair - Plastic	DSD-400P
	Outdoor Unit Stand 12 High	QSMS1201M
Centralized Drain Pan	Centralized Drain Pan	PAC-SG64DP-E
	Centralized Drain Pan	PAC-SH97DP-E
Wind Baffle	Front Wind Baffle	WB-PA5
	Rear Wind Baffle	WB-RE5
	Side Advanced Wind Baffle	WB-SD5
Air Outlet Guide	Air Outlet Guide 1 Piece	PAC-SG59SG-E
Control/Service Tool	ControlService Tool	PAC-SK52ST
	M- & P-Series Maintenance Tool Cable Set	M21EC0397
Snow/Rain Diverter	SnowRain Diverter	SRD-4
Drain Socket	Drain Socket	PAC-SG61DS-E
M-NET Converter	M-Net Interface for P-Series	PAC-SJ95MA-E
Optional Defrost Heater	Optional Defrost Heater	PAC-SK62BH-E
Hail Guards	Hail Guard	HG-A6
Mounting Pad	Condensing Unit Mounting Pad 24 x 42 x 3	ULTRILITE2
NOTES		

INDOOR UNIT DIMENSIONS: PAA-BA30NL



OUTDOOR UNIT DIMENSIONS: PUZ-AH30NL

