

MSZ-WX18NL & MUZ-WX18NL
17,200 BTU/H WALL-MOUNTED INDOOR UNIT
17,200 BTU/H INVERTER HEAT PUMP OUTDOOR UNIT



Job Name:

System Reference:

Date:



INDOOR Unit ... MSZ-WX18NL

OUTDOOR Unit ... MUZ-WX18NL

INDOOR UNIT FEATURES

- Econo Cool: Econo Cool is feature that temporarily adjusts the airflow to maintain comfort while using less energy.
- Smart Dry Mode: Improves humidity control with minimal over-cooling of the space.
- Swing Mode: An indoor unit with this capability can move air throughout the room like an oscillating fan.
- Nano Platinum Filter: This filter has a large capture area and incorporates nanometer-sized platinum-ceramic particles and is designed to reduce the presence of certain nonliving particles, while deodorizing the circulating air.
- Horizontal Vane Control: Horizontal Vane Control allows the indoor unit vanes to be moved left right to provide even temperatures throughout a space.
- Auto Changeover: The unit will automatically switch between heating and cooling modes to maintain your desired temperature.

OUTDOOR UNIT FEATURES

- Inverter Driven Compressor: Inverter technology uses only the precise amount of energy needed to keep a space comfortable.
- Blue Fin Coating: Anti-corrosion coating that protects the outdoor heat exchanger against salt, sulfur, and other airborne contaminants that impact the efficiency and performance of the outdoor units.
- Seacoast Protection: Designed to protect against the corrosive effects of environments that are in close proximity to the sea.

SPECIFICATIONS: MSZ-WX18NL & MUZ-WX18NL

Cooling at 95F ¹	Maximum Capacity	Btu/h	18000
	Rated Capacity	Btu/h	17200
	Minimum Capacity	Btu/h	5800
	Maximum Power Input	W	2170
	Rated Power Input	W	1810
	Moisture Removal	Pints/h	5.20
	Sensible Heat Factor		0.67
Heating at 47F ²	Power Factor [208V / 230V]	%	98 / 98
	Maximum Capacity	Btu/h	20800
	Rated Capacity	Btu/h	18000
	Minimum Capacity	Btu/h	5400
	Maximum Power Input	W	2600
	Rated Power Input	W	1680
Heating at 17F ³	Power Factor [208V / 230V]	%	97 / 97
	Maximum Capacity	Btu/h	15000
	Rated Capacity	Btu/h	11700
	Maximum Power Input	W	2510
Heating at 5F ⁵	Rated Power Input	W	1360
	Maximum Capacity	Btu/h	12660
Efficiency	Maximum Power Input	W	2470
	SEER2		18
	EER2 ¹		9.50
	HSPF2 [IV]		8.50
	COP at 47°F ²		3.14
	COP at 17°F at Maximum Capacity ³		1.74
	COP at 5°F at Maximum Capacity ⁵		1.5
Electrical	ENERGY STAR® Certified		No
	Voltage, Phase, Frequency	V AC / V AC , Hz	208 / 230 , 1 , 60
	Guaranteed Voltage Range	V AC	187 - 253
	Voltage: Indoor - Outdoor, S1-S2	V AC	230 / 208
	Voltage: Indoor - Outdoor, S2-S3	V DC	24
	Short-circuit Current Rating [SCCR]	kA	5
	Recommended Fuse/Breaker Size (Outdoor)	A	20
Indoor Unit	Recommended Wire Size [Indoor - Outdoor]	AWG	14
	MCA	A	1
	Fan Motor Output	W	30
	Fan Motor Type		DC Motor
	Airflow Rate at Cooling, Dry	CFM	277 , 341 , 411 , 473
	Airflow Rate at Cooling, Wet	CFM	249 , 307 , 370 , 426
	Airflow Rate at Heating, Dry	CFM	253 , 311 , 376 , 453
	Sound Pressure Level [Cooling]	dB (A)	32 , 38 , 44 , 49
	Sound Pressure Level [Heating]	dB (A)	31 , 36 , 41 , 46
	Drain Pipe Size O.D.	inch [mm]	5/8 [15.88]
	Dual Barrier Coating on Heat Exchanger		No
	Dual Barrier Coating on Fan		No
	External Finish Color		Munsell 0.7PB 9.2/0.4
	Unit Dimensions (W x D x H)	inch x inch x inch [mm x mm x mm]	33 x 9 x 11-1/16 [838 x 228 x 280]
	Package Dimensions (W x D x H)	inch x inch x inch [mm x mm x mm]	35-1/2 x 13-1/4 x 11-1/4 [900 x 340 x 290]
	Unit Weight	lbs [kg]	20 [9]
	Package Weight	lbs [kg]	23 [10.40]
IDU Operating Temp. Range	Cooling Intake Air Temp [Maximum / Minimum]	deg F , deg F / deg F , deg F	90 , 73 / 67 , 57
	Heating Intake Air Temp [Maximum / Minimum]	deg F	80 / 70
Outdoor Unit	MCA	A	16
	MOCP	A	20
	Fan Motor Full Load Amperage	A	0.71

Notes

¹Cooling (Indoor // Outdoor) °F 80 DB, 67 WB // 95 DB, 75 WB

²Heating at 47°F (Indoor // Outdoor) °F 70 DB, 60 WB // 47 DB, 43 WB

³Heating at 17°F (Indoor // Outdoor) °F 70 DB, 60 WB // 17 DB, 15 WB

⁴Heating at 5°F (Indoor // Outdoor) °F 70 DB, 60 WB // 5 DB, 4 WB. Not AHRI rated

⁵Indoor/Outdoor Unit Operating Temperature Range (Cooling Air Temp [Maximum / Minimum]): • Applications should be restricted to comfort cooling only; equipment cooling applications are not recommended for low ambient temperature conditions.

*Outdoor Unit Operating Temperature Range (Cooling Thermal Lock-out / Re-start Temperatures; Heating Thermal Lock-out / Re-start Temperatures): • System cuts out in heating mode and automatically restarts at these temperatures.

³Nominal capacity only. Actual capacity output varies based on the system specific configuration

SPECIFICATIONS: MSZ-WX18NL & MUZ-WX18NL

Outdoor Unit	Fan Motor Output	W	55
	Airflow Rate Cooling	CFM	1166
	Airflow Rate Heating	CFM	1152
	Defrost Method		Reverse Cycle
	Coating on Heat Exchanger (Bluefin, Sea Coast)		Yes, Yes
	Sound Pressure Level, Cooling ¹	dB (A)	53
	Sound Pressure Level, Heating ²	dB (A)	51
	Compressor Type		Twin Rotary
	Compressor Model		SRB140FQHMC
	Compressor Oil [Type // Charge]	// oz	RM68EH // 11.83
	External Finish Color		Munsell 3Y 7.8/1.1
	Base Pan Heater		Optional
	Unit Dimensions (W x D x H)	inch x inch x inch [mm x mm x mm]	31-1/2 x 11-1/4 x 21-5/8 [800 x 285 x 550]
	Package Dimensions (W x D x H)	inch x inch x inch [mm x mm x mm]	35-1/2 x 13-1/4 x 11-1/4 [900 x 340 x 290]
Unit Weight	lbs [kg]	81 [36.7]	
Package Weight	lbs [kg]	88 [39.9]	
ODU Operating Temp. Range	Cooling Intake Air Temp [Maximum / Minimum*]	F	115 / 32
	Cooling Thermal Lock-out / Re-start Temperatures**	F	-1 / 3
	Heating Intake Air Temp [Maximum / Minimum]	F, F / F, F	75, 65 / 5, 4
	Heating Thermal Lock-out / Re-start Temperatures**	F	-14 / -4
Refrigerant	Type		R454B
	Pre-Charged Refrigerant Amount	lbs, oz	2, 2
	Maximum Pre-Charged Piping Length	ft [m]	25 [7.50]
	Additional Refrigerant Charge Per Additional Piping Length	oz/ft	0.22
Piping	Gas Pipe Size O.D. [Flared]	inch [mm]	1/2 [12.72]
	Liquid Pipe Size O.D. [Flared]	inch [mm]	1/4 [6.35]
	Maximum Piping Length	ft [m]	65 [20]
	Maximum Height Difference	ft [m]	40 [12]
	Maximum Number of Bends		10

Notes

¹Cooling (Indoor // Outdoor) °F 80 DB, 67 WB // 95 DB, 75 WB

²Heating at 47°F (Indoor // Outdoor) °F 70 DB, 60 WB // 47 DB, 43 WB

³Heating at 17°F (Indoor // Outdoor) °F 70 DB, 60 WB // 17 DB, 15 WB

⁴Heating at 5°F (Indoor // Outdoor) °F 70 DB, 60 WB // 5 DB, 4 WB. Not AHRI rated

*Indoor/Outdoor Unit Operating Temperature Range (Cooling Air Temp [Maximum / Minimum]): • Applications should be restricted to comfort cooling only; equipment cooling applications are not recommended for low ambient temperature conditions.

**Outdoor Unit Operating Temperature Range (Cooling Thermal Lock-out / Re-start Temperatures; Heating Thermal Lock-out / Re-start Temperatures): • System cuts out in heating mode and automatically restarts at these temperatures.

³Nominal capacity only. Actual capacity output varies based on the system specific configuration

INDOOR UNIT ACCESSORIES: MSZ-WX18NL

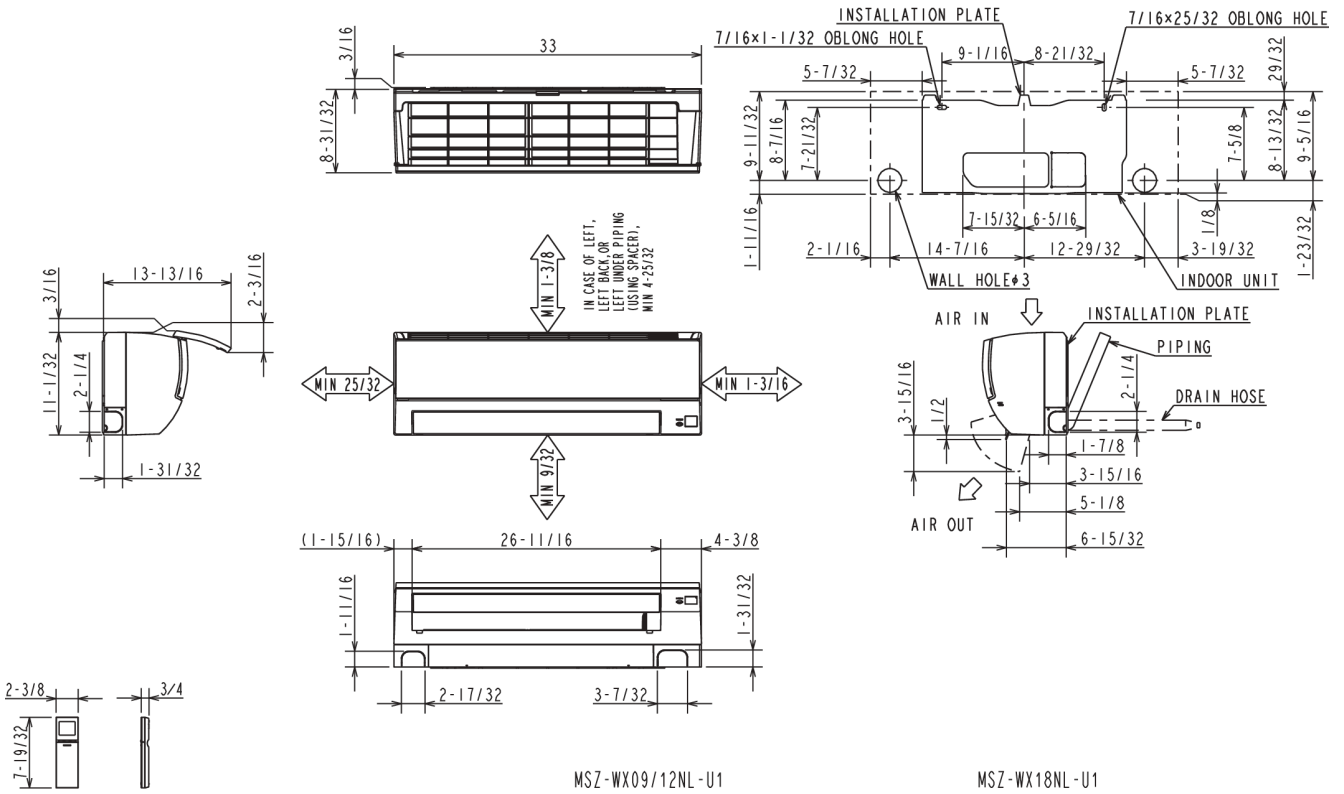
Condensate	Fascia Kit for MicroBlue Pump mounts the MicroBlue and sensor directly beneath indoor unit	<input type="checkbox"/> T18-016
	Sauermann Condensate Pump 120-230V up to 60k BTU/h	<input type="checkbox"/> SI30-230
	Refco Condensate Removal Pump with Wall Mount Enclosure 120-240V up to 120k BTU/h	<input type="checkbox"/> GOBI-II
	Blue Diamond MicroBlue Condensate Pump with Fascia Kit 115-230V up to 18k BTU/h	<input type="checkbox"/> X86-011
	Blue Diamond Sensor Extension Cable 15 Ft	<input type="checkbox"/> C13-103
	Blue Diamond MegaBlue Condensate Pump with Reservoir Sensor 115-230V up to 170k BTU/h	<input type="checkbox"/> X87-835
	Drain Pan Level Sensor/Control	<input type="checkbox"/> SS610E
	Refco Condensate Pump 100-240V up to 120k BTU/h	<input type="checkbox"/> COMBI
	Blue Diamond (MaxiBlue Advanced) Mini Condensate Pump w/ Reservoir & Sensor (110V) up to 48,000 BTU/H [recommended]	<input type="checkbox"/> X87-711
	Blue Diamond Advanced Mini Condensate Pump w Reservoir Sensor 208230V recommended	<input type="checkbox"/> X88-721
	Blue Diamond MicroBlue Condensate Pump 115-230V up to 18k BTU/h	<input type="checkbox"/> X86-003
Control Interface	Procon BACnet® and Modbus® Interface	<input type="checkbox"/> PAC-UKPRC001-CN-1
	Thermostat Interface for 3rd Party Thermostats	<input type="checkbox"/> PAC-US445CN-1
	Airzone Wireless Lite Controller Black	<input type="checkbox"/> AZZBSLITERN
	M-Net I/O Control Interface for M-Series ²	<input type="checkbox"/> MAC-334IF-E
	Airzone Wireless Lite Controller White	<input type="checkbox"/> AZZBSLITERB
	Airzone Wired Blueface Controller White	<input type="checkbox"/> AZZBSBLUEZEROCB
	Airzone Wireless Think Controller White	<input type="checkbox"/> AZZBSTHINKRB
	IT Extender	<input type="checkbox"/> PAC-WHS01IE-E
	kumo station® for Comfort app	<input type="checkbox"/> PAC-WHS01HC-E
	Airzone Wireless Think Controller Black	<input type="checkbox"/> AZZBSTHINKRN
	Airzone Wired Blueface Controller Black	<input type="checkbox"/> AZZBSBLUEZEROCN
	Wireless Interface 2 for Comfrot app	<input type="checkbox"/> PAC-USWHS002-WF-2
Disconnect Switch	30A600VUL fits 2 X 4 utility box - Black	<input type="checkbox"/> TAZ-MS303
	(30A/600V/UL) [fits 2" X 4" utility box] - White	<input type="checkbox"/> TAZ-MS303W
Drain Hose	Flexible Mini-Split Drain Hose	<input type="checkbox"/> DRX-16
Filter	Electro Static Anti-allergy Enzyme Filter	<input type="checkbox"/> MAC-2320FT-E
	Microparticle Filter	<input type="checkbox"/> MAC-EMF515FT-E
Lineset	15 x 1/4 x 15 3/8 Lineset Twin-Tube Insulation	<input type="checkbox"/> MLS143812T-15
	1/4 x 1/2 Lineset Twin-Tube Insulation - 15 feet	<input type="checkbox"/> MLS141212T-15
	30 x 1/4 x 30 3/8 Lineset Twin-Tube Insulation	<input type="checkbox"/> MLS143812T-30
	1/4 x 1/2 Lineset Twin-Tube Insulation - 100 feet	<input type="checkbox"/> MLS141212T-100
	50 x 1/4 x 50 3/8 Lineset Twin-Tube Insulation	<input type="checkbox"/> MLS143812T-50
	65 x 1/4 x 65 3/8 Lineset Twin-Tube Insulation	<input type="checkbox"/> MLS143812T-65
	1/4 x 1/2 Lineset Twin-Tube Insulation - 65 feet	<input type="checkbox"/> MLS141212T-65
	1/4 x 1/2 Lineset Twin-Tube Insulation - 50 feet	<input type="checkbox"/> MLS141212T-50
Remote Sensor	Wireless temperature and humidity sensor for Comfort app	<input type="checkbox"/> PAC-USWHS003-TH-1
	Remote Temperature Sensor for MFZ MLZ and MSZ models	<input type="checkbox"/> M21EAA307
Terminal Signal Adapter	Backup Heat Relay Kit	<input type="checkbox"/> CN24RELAY-KIT-CM3
Wired Remote Controller	Simple MA Remote Controller ¹	<input type="checkbox"/> PAC-YT53CRAU-J
	Deluxe MA Wired Remote Controller ¹	<input type="checkbox"/> PAR-42MAAUB
	Simple Direct Wired Remote Controller	<input type="checkbox"/> PAC-SDW01RC-1
	Touch MA Remote Controller ¹	<input type="checkbox"/> PAR-CT01MAU-SB
Wireless Remote Controller	Wireless RedLINK™ Remote Controller	<input type="checkbox"/> MHK2
	Lockdown Bracket for Wireless Handheld Remote Controllers	<input type="checkbox"/> RCMKP1CB
Notes		

OUTDOOR UNIT ACCESSORIES: MUZ-WX18NL

Air Outlet Guide	Air Outlet Guide	<input type="checkbox"/>	MAC-881SG-E
Control/Service Tool	Maintenance Tool Interface	<input type="checkbox"/>	PAC-USCMS-MN-1
	M- & P-Series Maintenance Tool Cable Set	<input type="checkbox"/>	M21EC0397
Drain Socket	Drain Socket	<input type="checkbox"/>	MAC-871DS
Hail Guards	Hail Guard	<input type="checkbox"/>	HG-B4
Mini-Split Wire	14 Gauge 4 wire Armored MiniSplit Cable250 ft roll	<input type="checkbox"/>	SW144-250
	14 Gauge 4 wire MiniSplit Cable50 ft roll	<input type="checkbox"/>	S144-50
	14 Gauge 4 wire MiniSplit Cable250 ft roll	<input type="checkbox"/>	S144-250
	14 Gauge 4 wire Armored MiniSplit Cable50 ft roll	<input type="checkbox"/>	SW144-50
Mounting Pad	Condensing Unit Mounting Pad 16 x 36 x 3	<input type="checkbox"/>	ULTRILITE1
Snow/Rain Diverter	SnowRain Diverter	<input type="checkbox"/>	SRD-1
Stand	24 Single Fan Stand	<input type="checkbox"/>	QSMS2401M
	Condenser Wall Bracket	<input type="checkbox"/>	QSWB2000M-1
	Outdoor Unit Stand 12 High	<input type="checkbox"/>	QSMS1201M
	18 Single Fan Stand	<input type="checkbox"/>	QSMS1801M
	Outdoor Unit 3-14 inch Mounting Base Pair - Plastic	<input type="checkbox"/>	DSD-400P
	Condenser Wall Bracket - Stainless Steel Finish	<input type="checkbox"/>	QSWBSS
Notes			

INDOOR UNIT DIMENSIONS: MSZ-WX18NL

MSZ-WX09NL-U1
 MSZ-WX12NL-U1
 MSZ-WX18NL-U1



MSZ-WX09/12NL-U1

PIPING	INSULATION	±1-15/32 O.D.
	LIQUID LINE	±1/4 - 19-11/16 (FLARED CONNECTION ±1/4)
	GAS LINE	±3/8 - 17-23/32 (FLARED CONNECTION ±3/8)
DRAIN HOSE		INSULATION ±1-5/32 CONNECTED PART ±5/8 O.D.

MSZ-WX18NL-U1

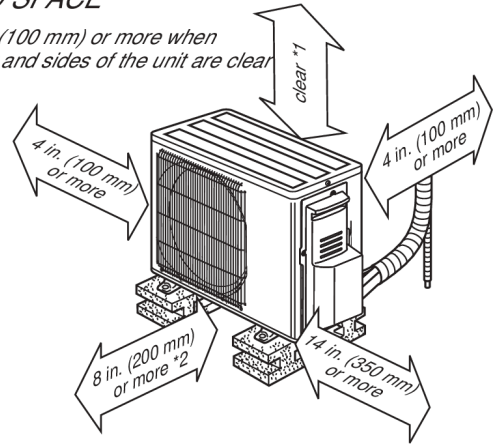
PIPING	INSULATION	±1-15/32 O.D.
	LIQUID LINE	±1/4 - 19-11/16 (FLARED CONNECTION ±1/4)
	GAS LINE	±3/8 - 17-23/32 (FLARED CONNECTION ±1/2)
DRAIN HOSE		INSULATION ±1-5/32 CONNECTED PART ±5/8 O.D.

OUTDOOR UNIT DIMENSIONS: MUZ-WX18NL

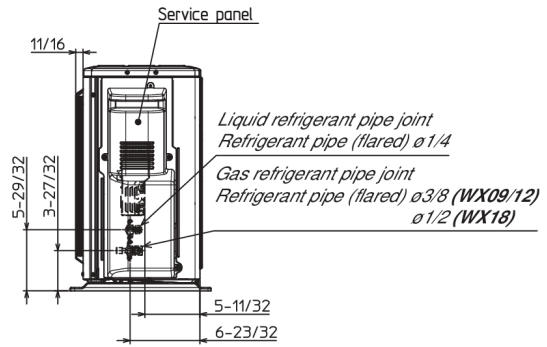
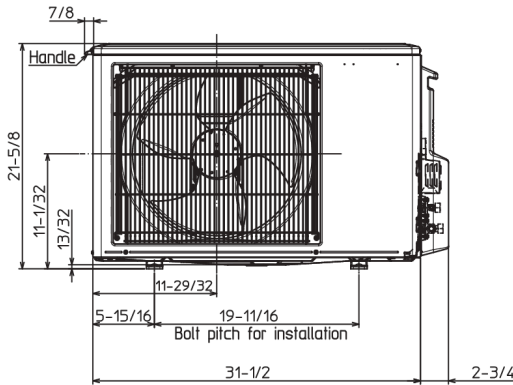
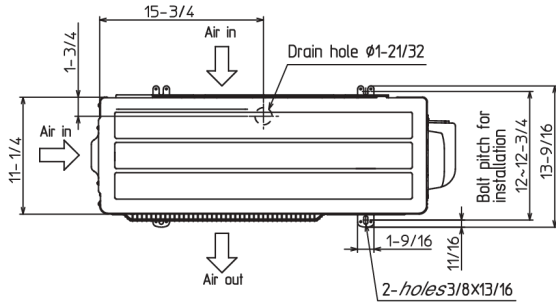
MUZ-WX09NL-U1
MUZ-WX12NL-U1
MUZ-WX18NL-U1

REQUIRED SPACE

**1 4 in. (100 mm) or more when front and sides of the unit are clear*



**2 When any 2 sides of left, right and rear of the unit are clear*



MUZ-WX09/12NL

REFRIGERANT PIPE JOINT	LIQUID REFRIGERANT PIPE	FLARED 1/4
	GAS REFRIGERANT PIPE	FLARED 3/8

MUZ-WX18NL

REFRIGERANT PIPE JOINT	LIQUID REFRIGERANT PIPE	FLARED 1/4
	GAS REFRIGERANT PIPE	FLARED 1/2

1340 Satellite Boulevard Suwanee, GA 30024
 Toll Free: 800-433-4822 · mitsubishicomfort.com

METUS_2026-05_PROPIN

